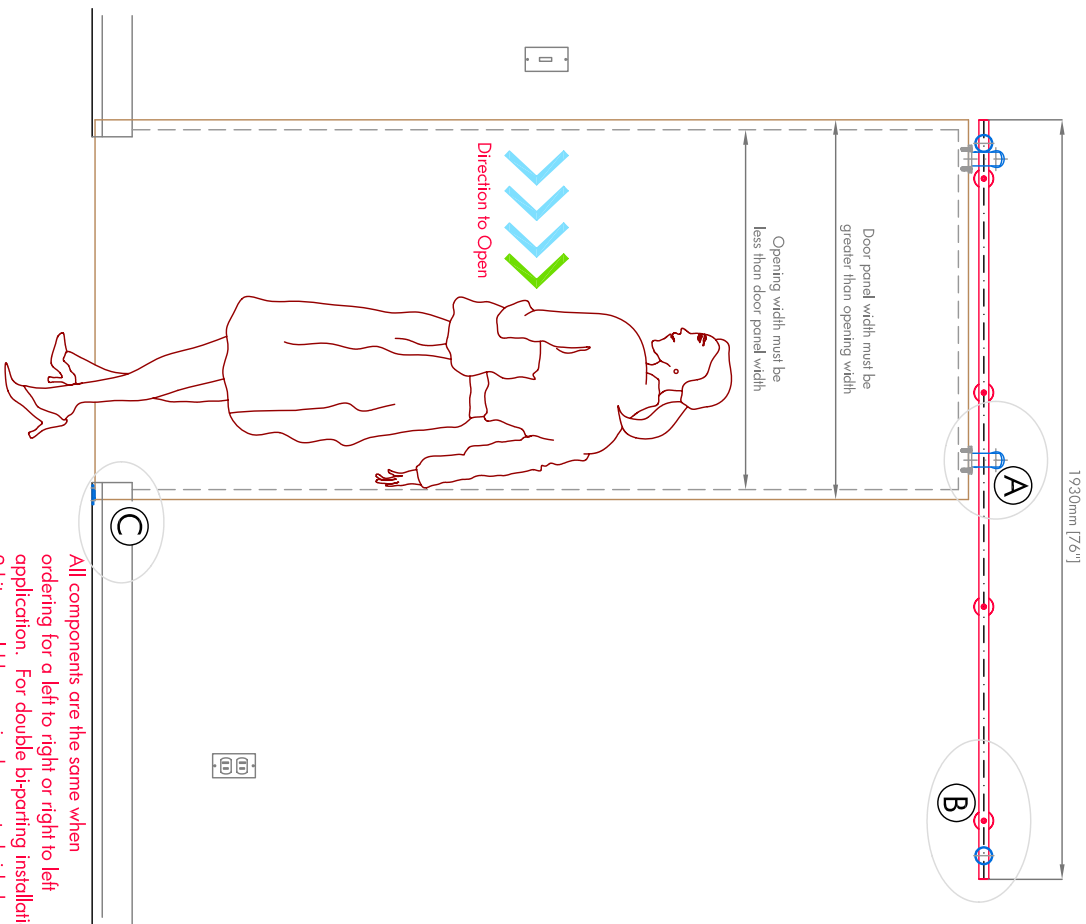
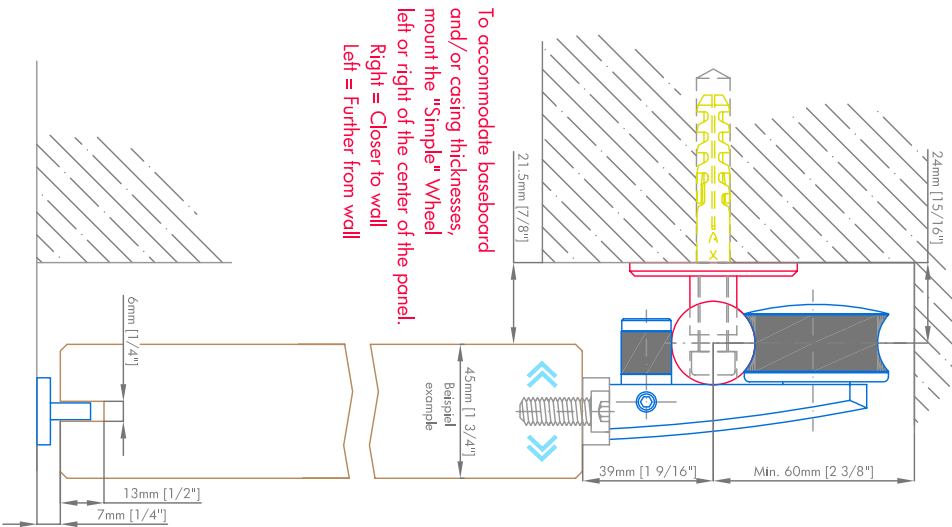
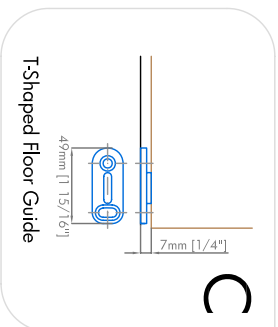
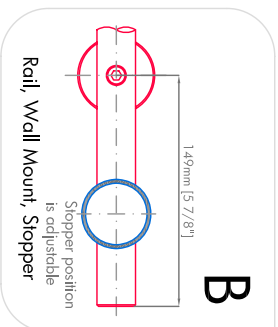
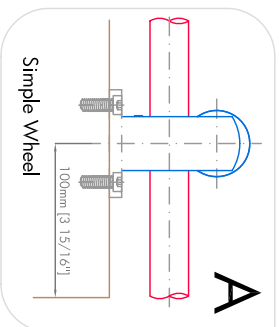


Simple exposed sliding system



All components are the same when ordering for a left to right or right to left application. For double bi-parting installations, 2 kits would be required, mounted side by side.



StainlessSteelStuff

It is the sole responsibility of the purchaser to provide adequate wall/ceiling support to accommodate the weight of the roll system.

Qty: 1
Rail = 76" x 1" dia.

Qty: 2
Simple Wheel

Qty: 2
Stopper

Qty: 4
Wall Mounting Material

Qty: 1
T-Shaped Floor Guide