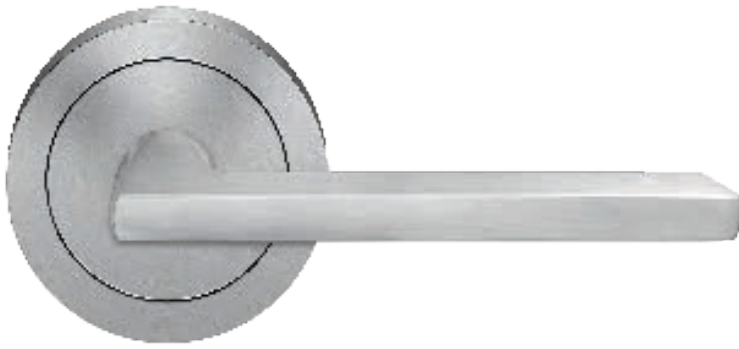


Tear Sheet  
Model Montana on rose by KARCHER DESIGN



**Montana**

Finish: satin stainless steel (71)

To suit standard 2 1/8" door prep



**Montana – UER54Q**  
2 5/8 x 2 5/8 x 7/16"



**Montana – UER54**  
Ø 2 5/8 x 7/16"

**Features UER54Q and UER54**

- 3 piece rose
- concealed bolt-through fixing
- sprung
- door range 1 1/4" (31 mm) - 2" (50 mm) standard
- T- and Lip-Strike with dust box
- stainless steel faceplate
- backsets: 2 3/8" (60 mm) or 2 3/4" (70 mm)
- functions: Passage (PAS), Privacy (PRI), full dummy (DUM), dummy left (DUML), dummy right (DUMR)
- available with UL-Latch
- 28° latch with attached face plate
- rate of satin stainless steel 304
- hub 5/16" (8 mm)
- door prep 2 1/8"
- available finish: satin stainless steel, cosmos black

product code  
square

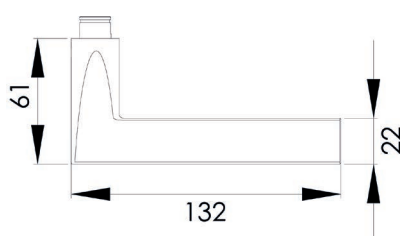
UER54Q PAS60 71	passage 2 3/8" backset
UER54Q PAS70 71	passage 2 3/4" backset
UER54Q PRI60 71	privacy 2 3/8" backset
UER54Q PRI70 71	privacy 2 3/4" backset
UER54Q DUM 71	full dummy
UER54Q DUML 71	half dummy left
UER54Q DUMR 71	half dummy right
UEDBQ 71	deadbolt to add to passage
UEDBQ A 71	deadbolt keyed alike

round

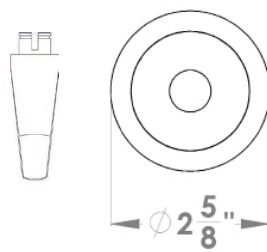
UER54 PAS60 71	passage 2 3/8" backset
UER54 PAS70 71	passage 2 3/4" backset
UER54 PRI60 71	privacy 2 3/8" backset
UER54 PRI70 71	privacy 2 3/4" backset
UER54 DUM 71	full dummy
UER54 DUML 71	half dummy left
UER54 DUMR 71	half dummy right
UEDB 71	deadbolt to add to passage
UEDB A 71	deadbolt keyed alike

**specification details**

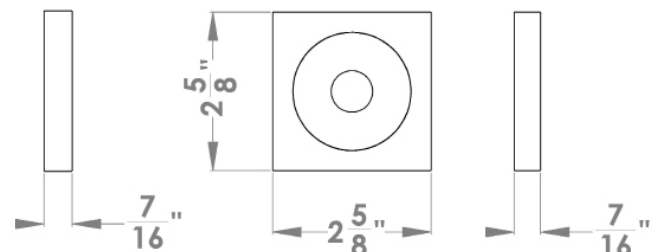
lever



round rose



square rose



Please note: Karcher Design products are designed and measured in metric. Imperial measurements are close approximations to the actual metric dimensions.