



STAINLESS

DOOR HARDWARE

www.StainlessDoorHardware.com

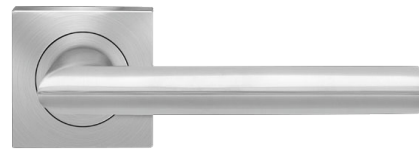
Tear Sheet
Model Verona on rose by KARCHER DESIGN



Verona

Finish: satin stainless steel (71)

To suit standard 2 1/8" door prep



Verona- UER 37Q
2 5/8 x 2 5/8 x 7/16"



Verona- UER 37
Ø 2 5/8 x 7/16"

Features UER37Q and UER37

- 3 piece rose
- concealed bolt-through fixing
- sprung
- door range 1 1/4" (31 mm) - 2" (51 mm) standard
- T- and Lip-Strike with dust box
- stainless steel faceplate
- backsets: 2 3/8" (60 mm) or 2 3/4" (70 mm)
- functions: Passage (PAS), Privacy (PRI), full dummy (DUM), dummy left (DUM L), dummy right (DUM R)
- available with UL-Latch
- 28° latch with attached face plate
- rate of satin stainless steel 304
- hub 5/16" (8 mm)
- door prep 2 1/8"
- available finish: satin stainless steel

product code square

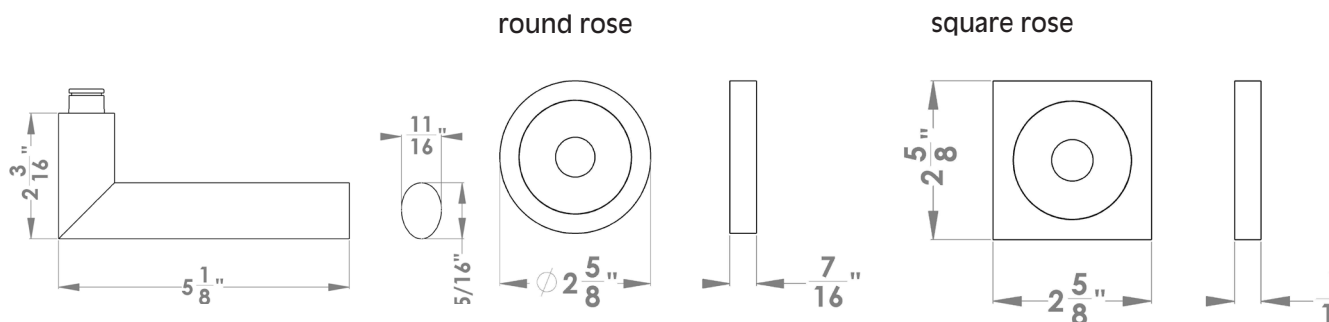
UER37Q PAS60 71	passage 2 3/8" backset
UER37Q PAS70 71	passage 2 3/4" backset
UER37Q PRI60 71	privacy 2 3/8" backset
UER37Q PRI70 71	privacy 2 3/4" backset
UER37Q DUM 71	full dummy
UER37Q DUML 71	half dummy left
UER37Q DUMR 71	half dummy right
UEDBQ 71	deadbolt to add to passage

round

UER37 PAS60 71	passage 2 3/8" backset
UER37 PAS70 71	passage 2 3/4" backset
UER37 PRI60 71	privacy 2 3/8" backset
UER37 PRI70 71	privacy 2 3/4" backset
UER37 DUM 71	full dummy
UER37 DUML 71	half dummy left
UER37 DUMR 71	half dummy right
UEDB 71	deadbolt to add to passage
UEDBA 71	deadbolt keyed alike



specification details



Please note: Karcher Design products are designed and measured in metric. Imperial measurements are close approximations to the actual metric dimensions