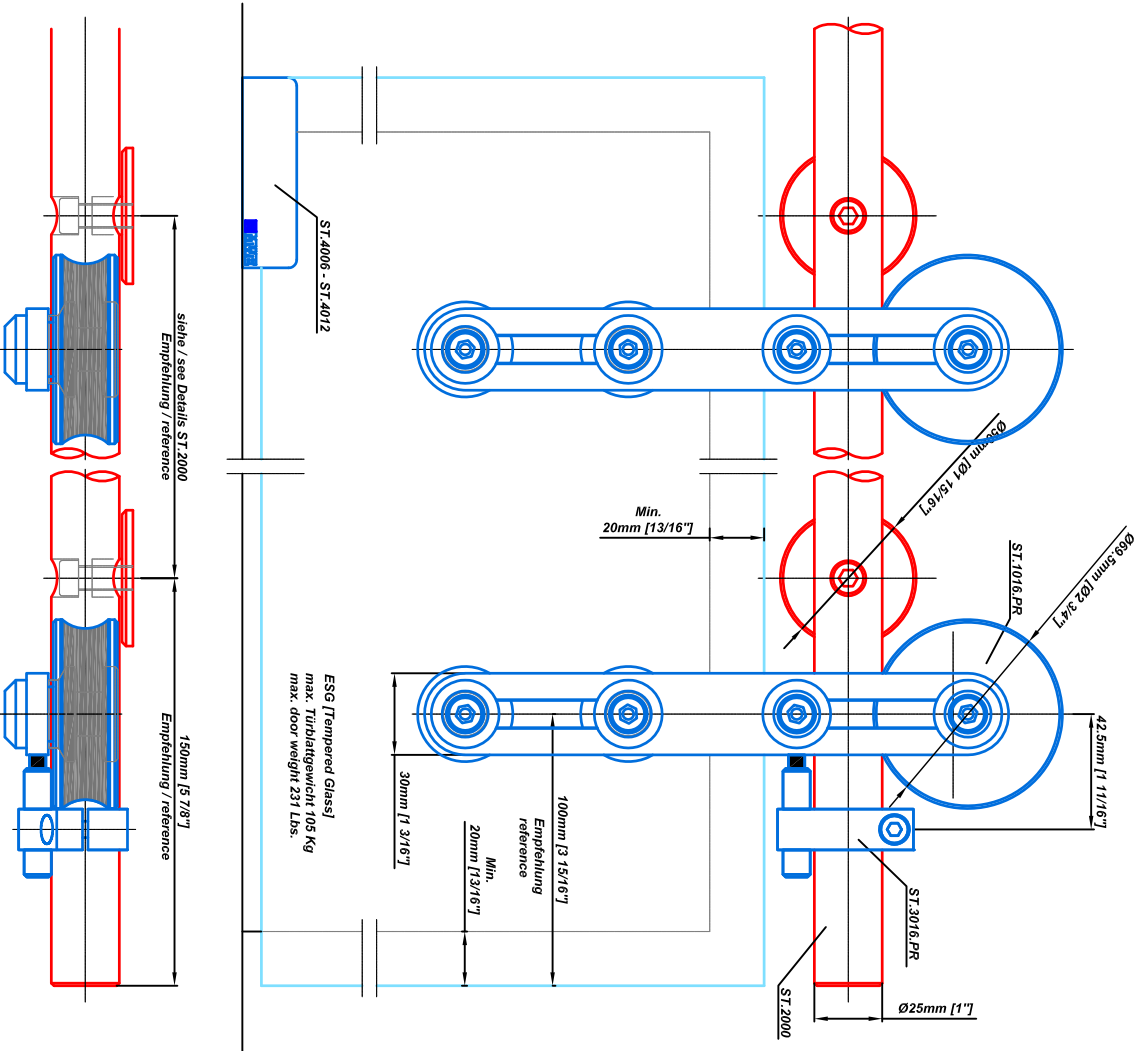
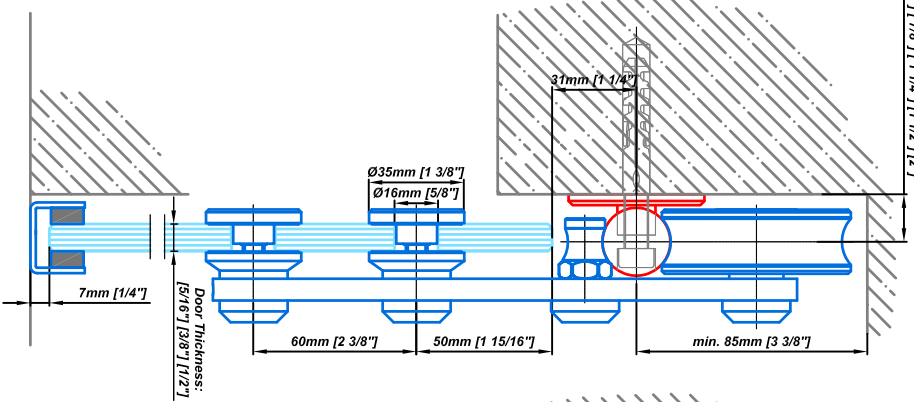


PROTEC [ST.1016.PR]



Standoff Distances Available at:
 [1 1/16"] [7/8"] [1 1/4"] [1 1/2"] [2"]



Copyright StainlessDoorHardware.com, all rights reserved.
 Reproduction or other use of these designs without written consent of StainlessDoorHardware.com is prohibited.
 Technical drawings are subject to change without notice.
 All millimeter dimensions are exact and supersede inch conversions.

Model-Nr. [Model Number]:	ST.1016.PR
Bezeichnung [Description]:	Protoc Barn Door Hardware
Datum [Date]:	24.February.2015

STAINLESS DOOR HARDWARE

Toll Free Phone: 1-866-331-4147
 www.stainlessdoorhardware.com
 sales@stainlessdoorhardware.com